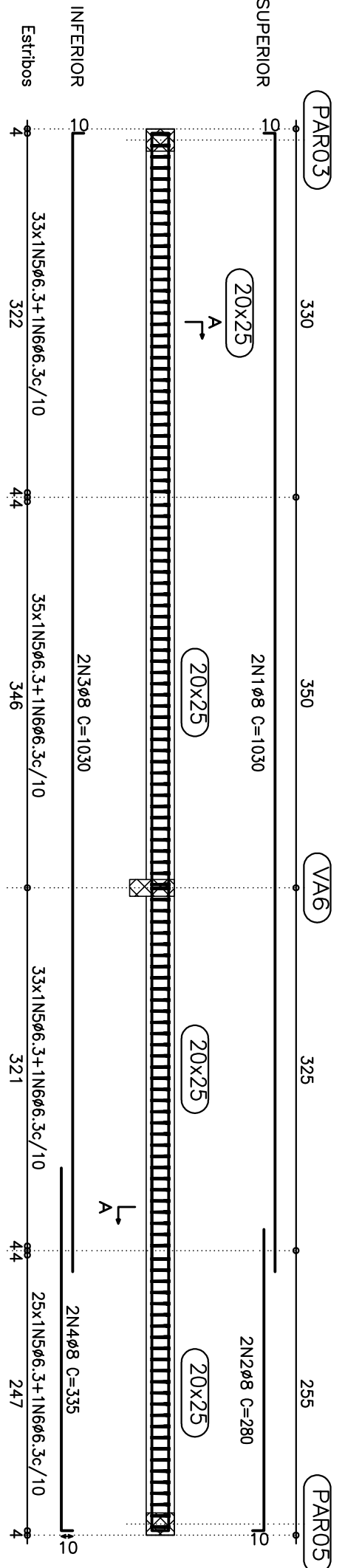


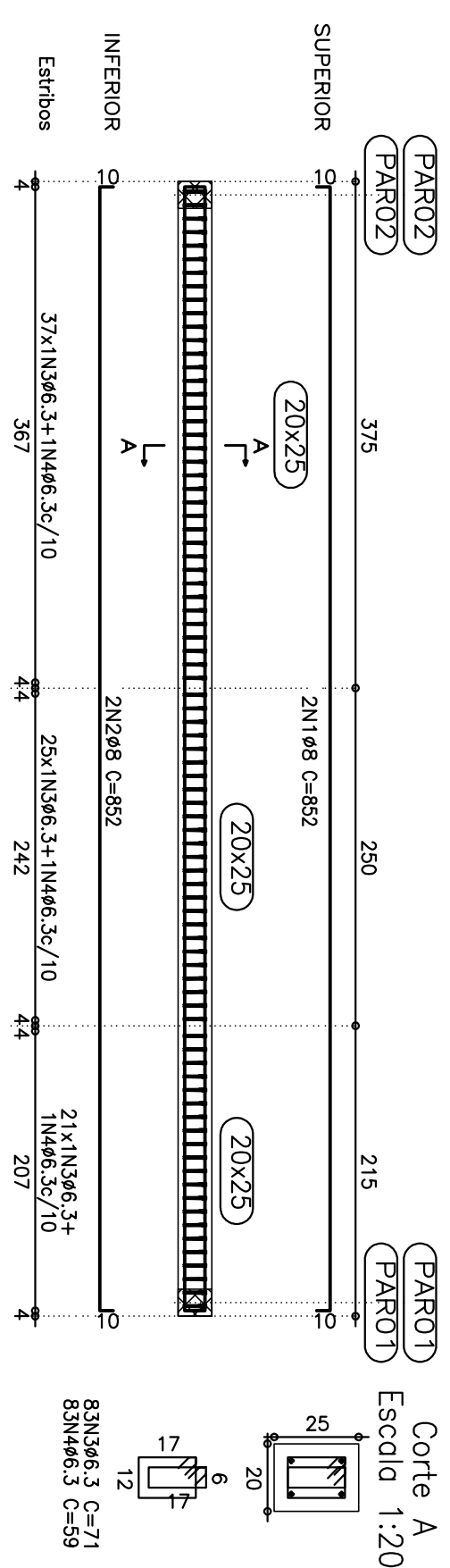
Nivel -> -0,30 m (310,700)
Concreto: C25, armação: Aço CA-50-A e CA-60-B
Escudo vigas: 1:50
Escudo seções: 1:20

V/A1

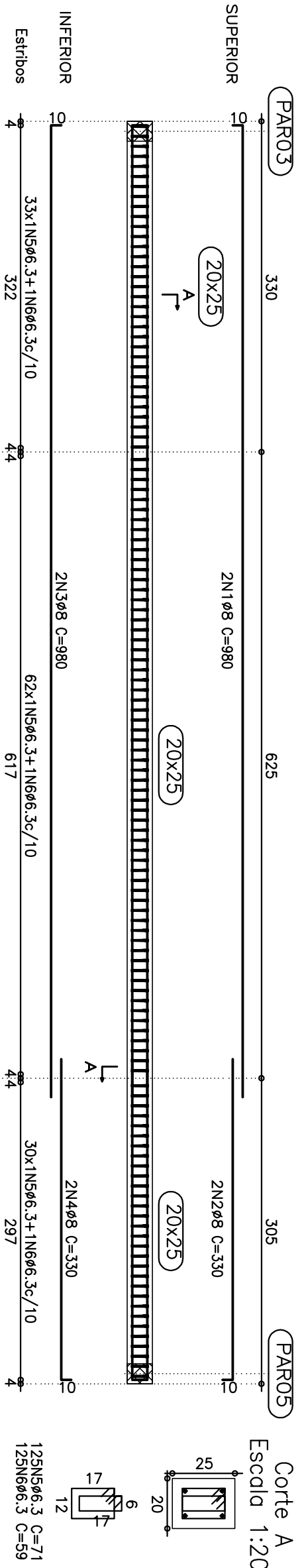
Escudo 1:50



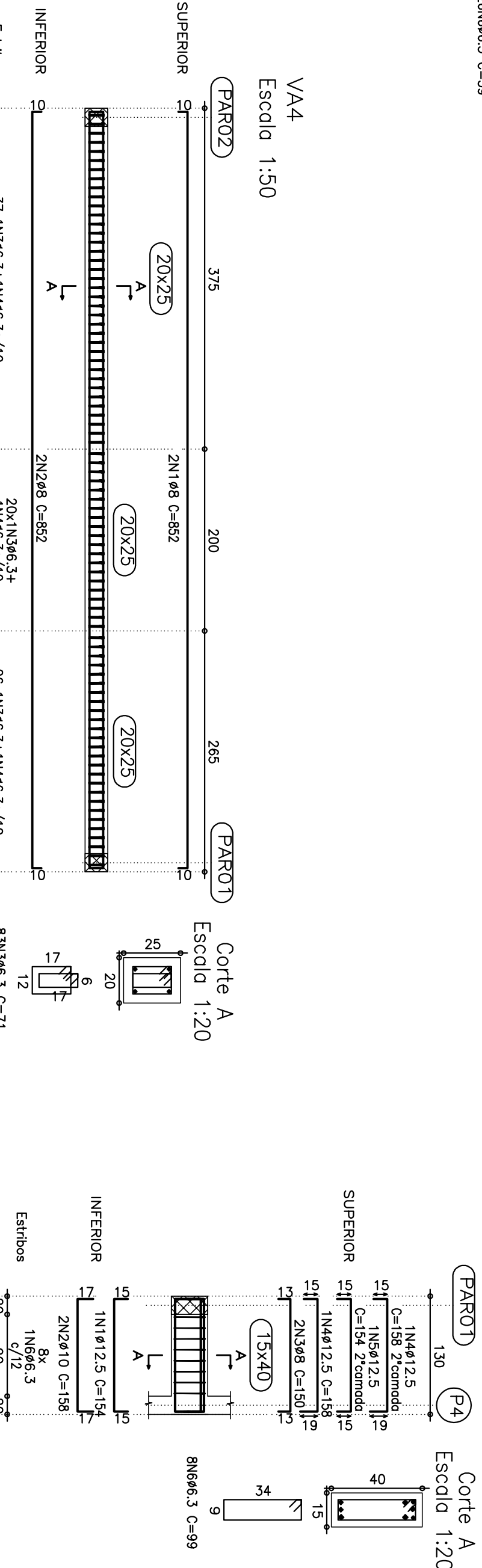
V/A3
V/A5
Escudo 1:50



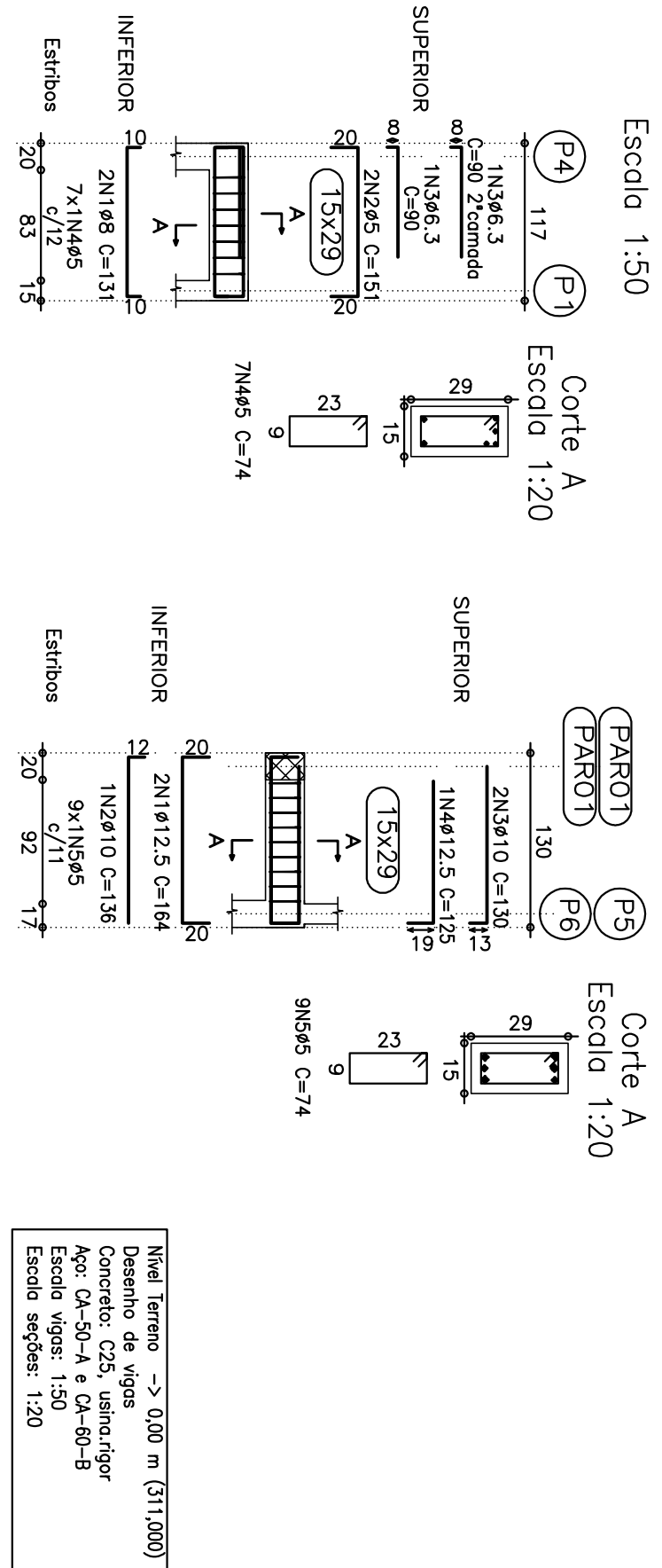
V/A2
Escudo 1:50



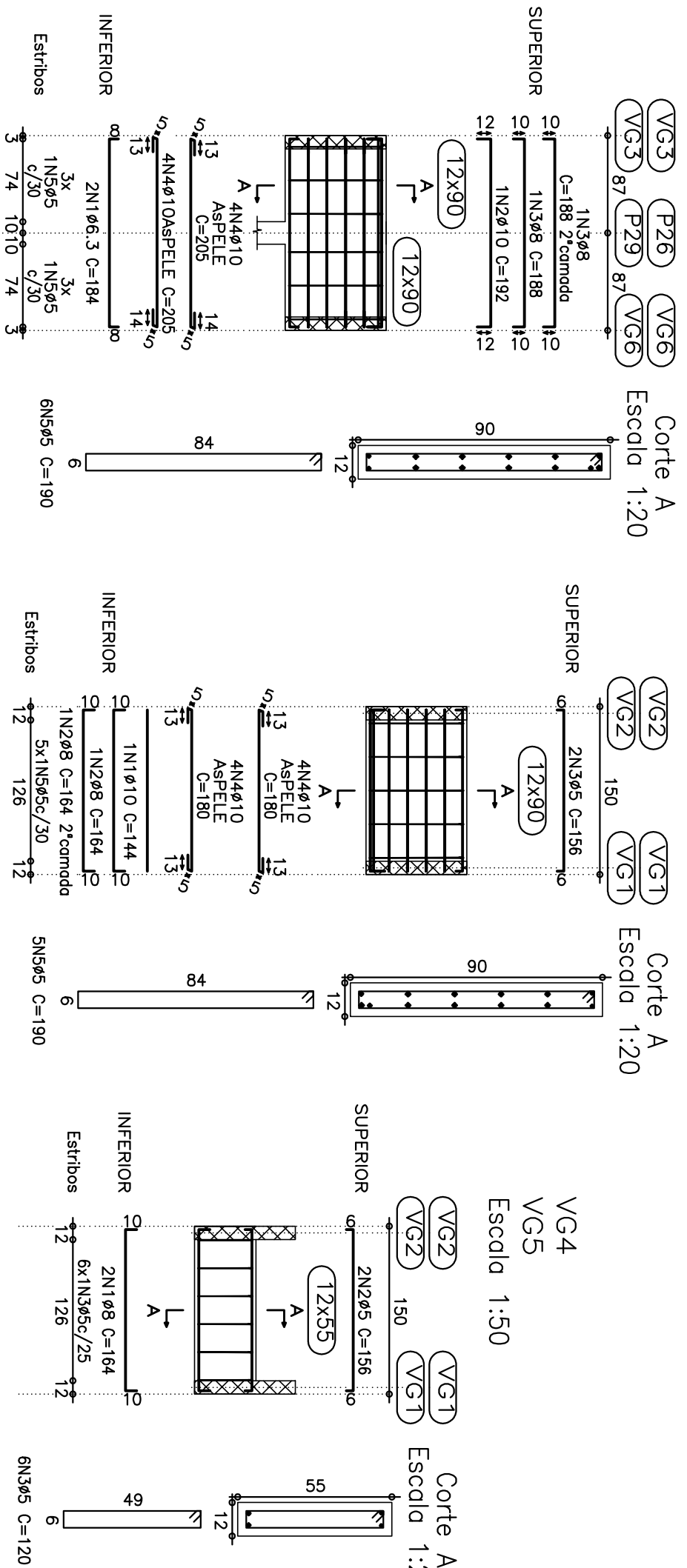
V/A6
Escudo 1:50



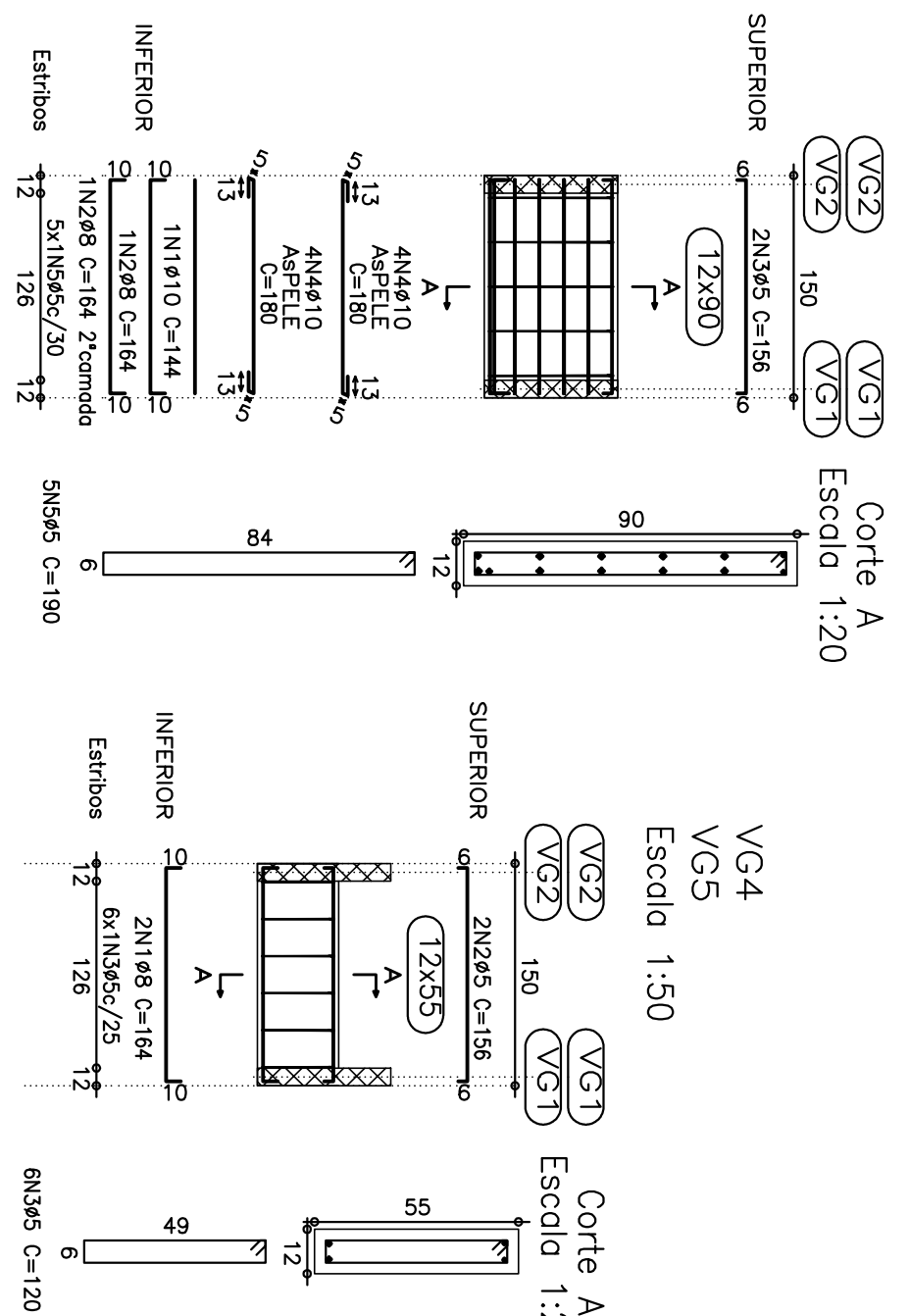
VB2
VB3
Escudo 1:50



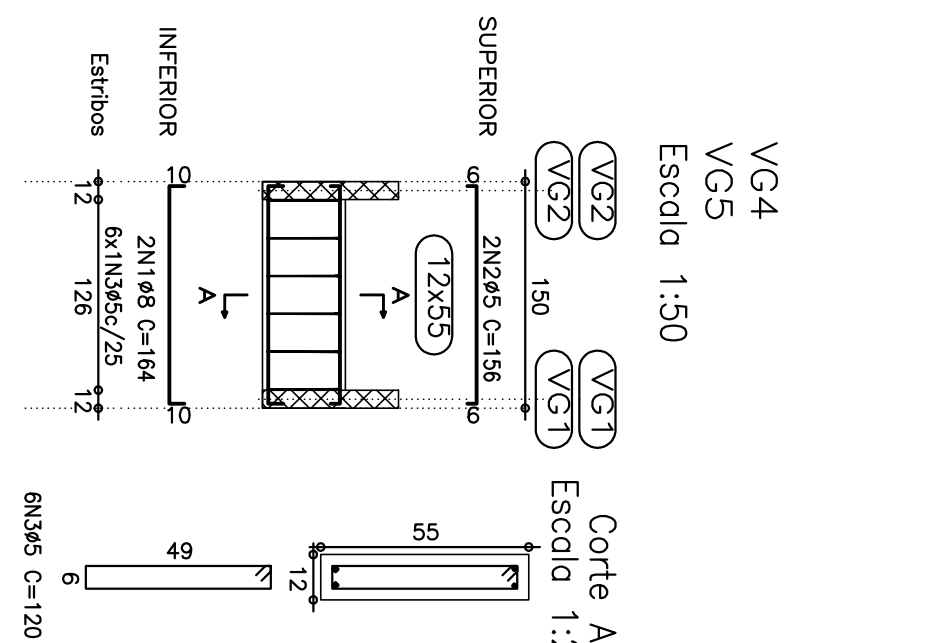
VG1
VG2
Escudo 1:50



VG3
VG6
Escudo 1:50



VG4
VG5
Escudo 1:50



Elemento	Pos	Diam.	Q _c (cm)	Dob.	Retq	Dob.	Comp.	Total	CA-50-A	CA-60-B	
VB1	1	ø8	2	10	111	10	131	262	1.0	0.5	
	2	ø5	2	20	111	20	151	302	0.4	0.8	
	3	ø6.3	2	8	82	90	180	0.4	0.8		
	4	ø5	2	74	518	74	518	1.5	1.4		
VB2=VB3	1	ø12.5	2	20	124	20	164	328	3.3	1.1	
	2	ø10	2	12	117	13	130	260	1.6	0.0	
	3	ø10	2	106	19	125	125	1.2	1.0	0.0	
	4	ø12.5	2	74	66	74	66	1.0	0.0	0.0	
	5	ø5	9	Total+10%	7.6	15.2	2.2	1.1			
									ø5:	0.0	3.6
									ø6.3:	0.4	0.0
									ø10:	5.6	0.0
									ø12.5:	9.6	0.0
									Total:	16.7	3.6